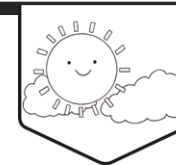
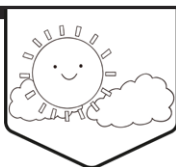


Another child at school has been picking on you for a few weeks. They keep calling you names and doing things like knocking your bag out of your hand and pushing you in the corridor.

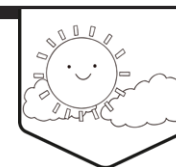


You have left your homework till the night before it is due in. You are finding it really hard and your parents are too busy to help. You don't know what to do.

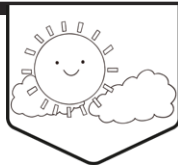
This resource is fully in line with the Learning Outcomes and Core Themes outlined in the PSHE Association **Programme of Study**.



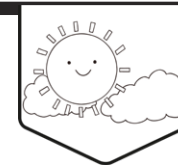
It is the class assembly and someone is away. Your teacher has asked you to step in at the last minute and cover their part. They had a lot to say. You know your lines, but not theirs as well.



Your pet kitten has been knocked down by a car outside your house and the vet has said it would be best to put it down.

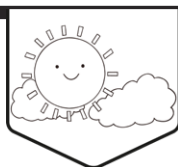


You're playing a football match with your team. It's the semi-final and you score what should be the winning goal. But the referee has said it was off-side and doesn't allow it.

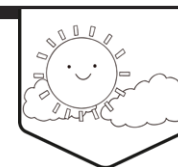


Your friend has come to play at your house. They pick up your new favourite toy, then drop it and it breaks.

This resource is fully in line with the Learning Outcomes and Core Themes outlined in the PSHE Association **Programme of Study**.



You are staying at your friend's house overnight. It's the first time you have done a sleep over. Your friend's house is big, old and dark.



Your little sister is always annoying you. You've just spent ages building a model and it looks brilliant. Then she comes along and smashes it!