

# Conception to Birth: Images and Vocabulary

## A

### **amniotic fluid** -

The fluid surrounding the foetus in the womb.

### **amniotic sac** -

The fluid-filled sac that contains and protects a foetus in the womb.

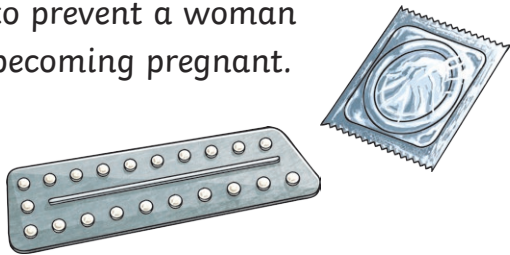
## C

### **conception** -

The process of a male and a female sex cell joining and causing a baby to start to form.

### **contraception** -

Any of various methods intended to prevent a woman becoming pregnant.



## E

### **egg** -

A cell produced by a woman or female animal from which a baby can develop if it combines with a male sex cell.

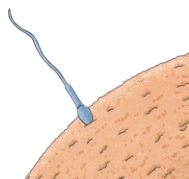
### **embryo** -

An animal (including a human) that is developing either in its mother's womb or in an egg.

## F

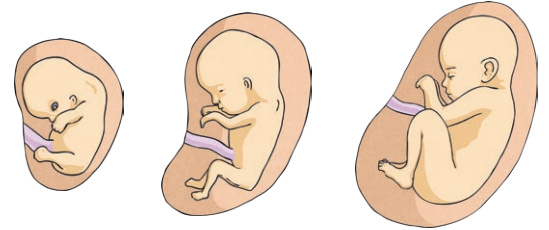
### **fertilise** -

To cause an egg or seed to start to develop into a new young animal or plant by joining it with a male cell.



### **foetus** -

A young human being or animal before birth, after the organs have started to develop.



## G

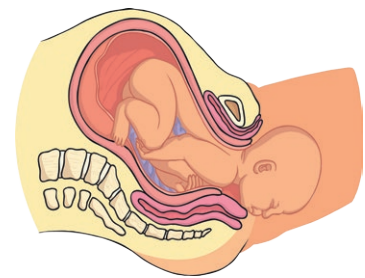
### **gene** -

A part of the DNA in a cell that controls the physical development, behaviour, etc. of an individual plant or animal and is passed on from its parents.

## L

### **labour** -

The last stage of pregnancy from the time when the muscles of the womb start to push the baby out of the body until the baby appears.



## N

### **nutrients** -

Any substance that plants or animals need in order to live and grow.



This resource is fully in line with the Learning Outcomes and Core Themes outlined in the PSHE Association [Programme of Study](#).

O

**oxygen -**

A chemical element that is a gas with no smell or colour. Oxygen forms a large part of the air on earth, and is needed by animals and plants to live.

P

**penis -**

The part of a male's body that is used for urinating and for sex.

**placenta -**

The temporary organ that provides a foetus with food and oxygen inside its mother's womb.

R

**reproduction -**

The process of having babies, producing young, or producing new plants.

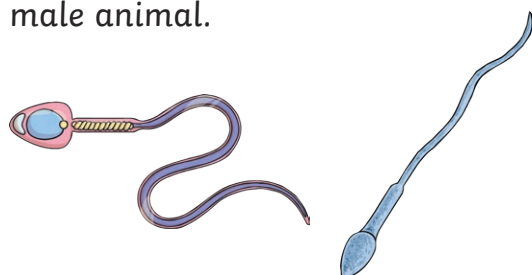
S

**sexual intercourse -**

Sexual contact between individuals involving penetration, especially the insertion of a man's erect penis into a woman's vagina.

**sperm -**

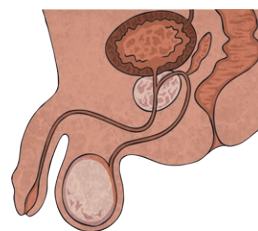
A sex cell produced by a man or male animal.



T

**testicles -**

The two round male sex organs that produce sperm and are contained in the scrotum (bag of skin) below and behind the penis.



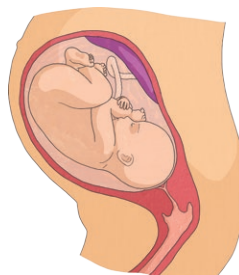
U

**umbilical cord -**

The long, tube-like structure that connects a baby that has not yet been born to its mother's placenta.

**uterus (otherwise known as womb) -**

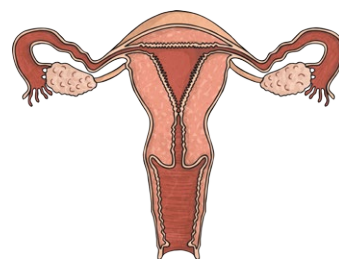
The organ in the body of a woman or other female mammals in which a baby develops before birth.



V

**vagina -**

The part of a woman or other female mammal's body that connects her outer sex organs to her uterus.



Z

**zygote -**

The cell that is formed when a female reproductive cell and a male reproductive cell join (before it becomes an embryo).